

THE PROMPTER

The Voice of Loveland Stage Company

April 2019

SHOW ISSUE

*An Evening
of Mystery*



Cabaret Seating
**SORRY,
WRONG
NUMBER**

And

THE HITCH-HIKER

Tickets Now On Sale

WWW.LOVELANDSTAGECOMPANY.ORG Call 513-443-4572 for Handicap Seating

LSC ANNOUNCES ITS 2019–2020 SEASON !



Loveland Stage Company

About *Sorry, Wrong Number* and *The Hitch-Hiker*

Just a decade ago, if people wanted to watch a show on television they had to figure out when it would air and then tune in to the correct channel at the correct time. Fifty years before that, even though black and white television was relatively common, the big entertainment came from radio.

Radio dramas, plays that were heard on the radio rather than seen, were the 1940s version of the modern TV show - a story that is either told in a half an hour or that continues with a new installment each week. One popular radio show, *Suspense*, regularly aired short, suspenseful radio plays.

In 1943 ***Sorry, Wrong Number*** first aired on the *Suspense* radio program. This story by Lucille Fletcher went on to be considered one of the greatest radio drama episodes. It was adapted to become a movie, and a later production of the radio drama won The Edgar Award for Best Radio Drama.

Sorry, Wrong Number tells the story of Mrs. Elbert Stevenson an invalid woman confined to her bed, who becomes increasingly frantic as the story progresses. The drama begins with Mrs. Stevenson attempting to call her husband, who is working late

The Hitch-Hiker is a ghost thriller and has the quality of an anecdote out of American folklore, drawing as it does on the local color and place-names of the United States. It is the tale of Ronald Adams, an average motorist, who sets out to drive from Brooklyn to California, and early on his journey begins to encounter a strange and inexplicable hitchhiker





Loveland Stage Company

From the Director

An Evening of Mystery is dedicated to my mom, Jackie Knapp, a creative director in the Cincinnati area, within community theater. Many of our cast were in shows my mom directed.

I am extremely excited to present this fabulous cast and crew in these two one act plays. It is also exciting to present them for the first time with a new flair "cabaret style" seating. This is a new style of presentation for LSC and I encourage you to leave us your comments and suggestions. You can find forms to fill out in the lobby.

I invite any and all of you to become involved in local community theater, either on stage or behind the scenes. There is always a need for set builders, costume assistants, lighting assistants or ushers.

Join us as we take a trip back in time, a trip to the 1940's where radio is the main source of our entertainment.

Glenna Knapp - Director





Loveland Stage Company

MEET THE CAST OF SORRY, WRONG NUMBER

Ann Barfels

Chief Operator

Brook Bobbitt

Mrs. Stephenson

Nicole Cornelius

Operator 2, Information

Bryce (Alex) Few

Delivery Person

Piper Garman

Western Union Official

Brenna Lambert

4th Operator

Emma Lay

Hospital Clerk

Joseph Moreland

Sergeant Duffy

Evangeline Perkins

Operator 3

Jenna Schroeder

Operators 1 and 5

Kent Slyder

1st Man

Sam Slyder

2nd Man (George)



**An Evening of Mystery
at
Loveland Stage Company**



Loveland Stage Company

MEET THE CAST OF THE HITCH-HIKER

Ann Barfels

Bryce (Alex) Few

Piper Garman

Heather Geary

Steve Geary

Mrs. Adams

Albuquerque Operator

Girl Hitchhiker

Proprietor's Wife

Roadside Proprietor

Brenna Lambert

Emma Lay

Evangeline Perkins

Jenna Schroeder

Elizabeth Vandergrift

Lee Vest

Local Operator

Station Attendant

Long Distance Operator

NY Operator

Mrs. Whitney

Ronald Adams



**An Evening of Mystery
at
Loveland Stage Company**



Loveland Stage Company

MEET THE CREW OF AN EVENING OF MYSTERY

Glenna Knapp
Gregory Carl Smith
David Vest
Denise Schnieders
Vincent Eldridge

Vincent Eldridge
Gregory Carl Smith
Glenn Bladh
Mike Liles
Glenna Knapp

Joe Neumann
David Vest
Jae Liles
Bobby Jo Swearingen
Gregory Carl Smith

Ava Swearingen
Bobby Jo Swearingen
Pam Carothers
Nancy Downing
Jill Gornet
Becky Giver

Gary Giver
Dick Dyson
Peter Sexton
Bobby Jo Swearingen
Ann Barfels
Nancy Downing

Director
Producer
Stage Manager
Costume Design
Lighting Design

Lighting Execution
Lighting Execution
Sound Design
Sound Execution
Set Design

Set Décor
Master Carpenter
Properties
Hair and Makeup
Program Design

Lobby Display
Lobby Display
Box Office
Box Office
Box Office
House Manager

House Manager
Board Liaison
Graphic Design
Hospitality
Publicity
Publicity



Loveland Stage Company



An Evening of Mystery in Rehearsal



Loveland Stage Company

Seat Yourself

We've made the process of purchasing tickets to our performances simple and convenient for you. By using an on-line ticketing service, we put you in control of the reservation, seat selection, and payment process.

Visit our website (<http://www.lovelandstagecompany.org>), select Tickets from the menu and click on the Seat Yourself icon. Simply select a performance date, then choose your seats from the theater seating chart.

Purchase your tickets, print your receipt, and your reservation is complete – it's quick and convenient!

When you arrive for your performance, please present the printed receipt for your ticket purchase to the box office.

All on-line ticket sales are final; sorry, but no refunds or exchanges. On-line ticket sales close 12 hours before performance time.

Tickets for Handicapped (Wheelchair) Seating

For wheelchair seating, please call the Loveland Stage Company (513) 443-4LSC (4572) for tickets. We will handle all Handicapped Ticket Sales personally, Seat Yourself is not available for these tickets.

Walk-in Ticket Sales

The box office opens two hours prior to the start of a performance. Theater doors open 30 minutes before the start of a performance. A limited amount of tickets may be available for purchase at the box office prior to each performance. Payment by cash, check or credit card.

Loveland Stage Company's 2019—2020 Season

BUGSY MALONE JR.

Directed by Pia Rader
Produced by Jonathan Eckman
& Jill Gornet

July 12th - 21st 2019

MAMMA MIA

Directed by Deidre Dyson
Technical Director Glenna Knapp
Produced by Steve & Theresa Kovacs

August 16th - 25th 2019



COLE, AN ENTERTAINMENT

Directed by Gregory Carl Smith
Technical Director Chris Lee
Produced by Pat Furterer & K Buckler

Nov. 1st - 17th 2019



'AN OLDE FASHIONED CHRISTMAS'

Free Production
Christmas in Loveland
Directed by Pat Furterer

Dec. 14th 2019

GYPSY

Directed by Micheal Kiser
Produced by Tom Cavano,
Becky Cole & Jill Gornet

March 6th - 22nd 2020



THE MUSICAL COMEDY MURDERS OF 1940

Directed by Becky Cole
Produced by Jill Gornet

May 15th - 24th 2020



Season Ticket Packages go on sale in June 2019

Visit our website (www.lovelandstagecompany.org) for more information



**Our 40th Consecutive Season
of Quality Community Theater**

2018-2019

Watch for 2019-2020

season ticket

information coming in

www.lovelandstagecompany.org

513-443-4572

June

Visit our website (www.lovelandstagecompany.org) for more information



Loveland Stage Company
is proud to have our 2019-20 Season
sponsored by:



Putting your family and your financial goals first

*Shouldn't the Person Entrusted With Your Dreams Be
Someone You TRUST?*

Wealth Accumulation & Retirement Planning

Investment Management

Portfolio Risk Management

401K Advice

College Planning



Art Jarvis

President/Chief Investment Officer

Jarvis Global Investments

513-377-8285



Loveland Stage Company

2018—2019 Season



Summer Youth Program

July 13th – July 22nd

Disney's The Little Mermaid

Directed by—Christina Siciliano

Produced by—Kate Arnold, Sue Lundy, Barb Siciliano



Fall Musical

November 2nd – November 18th

Memphis

Directed by—Liz Olekas

Produced by—Tom Cavano, Jonathan Eckman



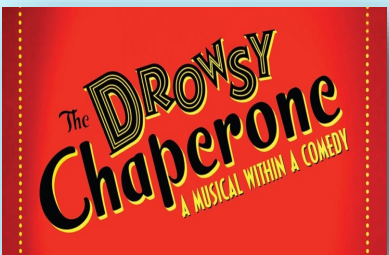
Christmas in Loveland Free Performance

December 15th – 6pm and 7pm

Groovin' With Santa

Directed by—Donna Treinen

Produced by—Missy Fram, Sherry Michalak



Spring Musical

March 1st – March 17th

The Drowsy Chaperone

Directed by—Marissa Griffith Sloan

Produced by—Jill Gornet



Tickets Now on Sale

April 26th – May 5th

Sorry, Wrong Number

Directed by—Glenna Knapp

Produced by—Gregory Carl Smith

Sponsored by Jarvis Global Investments LLC



Loveland Stage Company



Drowsy Chaperone Recap



Loveland Stage Company





Loveland Stage Company

Countdown to our 40th Season

1979	Season 1	1 st Production <i>My Three Angels</i>
1984	Season 6	10 th Production <i>Exit the Body</i>
1988	Season 10	20 th Production <i>On Pond</i>
1990	Season 12	25 th Production <i>Let's Murder Marsha</i>
1993	Season 15	30 th Production <i>Applause</i>
1998	Season 20	40 th Production <i>Harvey</i>
2003	Season 24	50 th Production <i>Jerry's Girls</i>
2006	Season 27	60 th Production <i>Annie Get Your Gun</i>
2008	Season 29	70 th Production <i>Seussical</i>
2009	Season 30	75 th Production <i>Godspell Jr.</i>
2010	Season 31	80 th Production <i>Anything Goes</i>
2013	Season 34	90 th Production <i>Cats</i>
2016	Season 37	100 th Production <i>Will Rogers' Follies</i>
2019	Season 39	109 th Production <i>Sorry, Wrong Number</i>

The Loveland Stage Company is 40 years young this year,
my how time flies!!!!.

We are planning a grand party for Saturday, September 14th at Receptions in Loveland so "save the date" and plan on attending the festivities to help celebrate our fantastic community theater company..... more to come.

MARK YOUR CALENDARS

Loveland Stage Company 40th Anniversary Gala
September 14th 2019



Committee:

Kay Bolin, K Buckler, Nancy Downing, Pat Furterer,
Peggy Goodwin, Donna Treinen, Jeanne Welsh



Loveland Stage Company

2018 – 2019 Board of Directors

Officers

President	Jonathan Eckman	eckman.15@buckeyemail.osu.edu
Vice President	Bob Kessler	kessler@fuse.net
Secretary	Kate Arnold	zingagirl1961@yahoo.com
Secretary	Donna Treinen	dtreinen1@gmail.com
Treasurer*	Kim Luzader	hoosier1.kl@gmail.com
President Emeritus	Pat Furterer	rpfurterer@fuse.net

Members at Large

Christina Siciliano	christinasiciliano19@gmail.com
Richard Dyson	dyson.r@fuse.net
Charlie Rader	rader.dc@pg.com
Glenn Bladh	gbladh@homewerxcentral.com

Advisory Board

Jeff Atkinson	jeffrey.atkinson@edwardjones.com
Peggy Goodwin	pjgoodwin@fuse.net
Dave Welsh	davewelsh@fuse.net
Chris Longwell	chris@clongwell.com

Honorary Advisor

Chief Otto Huber

*- Appointed non-voting position



LSC Elections

Annual Meeting

May 21st - 7 pm

Loveland Stage Company -- Board of Directors Terms

Name	Elected	Term Expires	Renewal Eligible?
Pat Furterer	n/a	n/a	n/a
Jonathon Eckman	2016/2018	2020	N
Bob Kessler	2015/2017	2019	N
Charlie Rader	2018	2020	Y
Donna Treinen	2016/2018	2020	N
Kate Arnold	2017	2019	Y
Dick Dyson	2016/2018	2020	N
Glen Bladh	2018	2020	Y
Christina Siciliano	2017	2019	Y

Term Expiring

Bob Kessler, Kate Arnold and Christina Siciliano

Eligible for re-election

Kate Arnold and Christina Siciliano

Nominated by Nominating Committee

Kate Arnold, Micheal Kiser and Dave Marcus

Nominations will also be taken from the floor at meeting

THANK YOU to the Nominating Committee of
Carolyn Finn, Margie Clegg, Dave Marcus, Kate Arnold & Pat Furterer

ELECTION



LSC Elections

Biography for Board Nomination Kate Arnold

Kate has been involved with Loveland Stage Company since the very beginning so it holds a special place in her heart to say the least! The group has been an important part of her life through the years and she would like to be a part of making sure that it is able to do the same for many others. Kate has experience in performing, directing and producing. Kate also keeps busy with teaching yoga and spending time with her three grown children and her husband, Rick.

Biography for Board Nomination Micheal Kiser

Micheal studied acting at the American Academy of Dramatic Arts in New York, NY. After attending the program, he went to learn his theatre craft by studying set design at Sinclair Community College and then finishing his studies at The Art Institute of Pittsburgh. All the while participating in various theater groups and starting a Haunted House in Pittsburgh. He even started a community theater group in Pittsburgh with his Brother and Sister in law, which is still going strong to this day. After moving to Cincinnati five years ago, Micheal began to participate with various theatre groups in the city. His first venture with LSC was portraying Utterson in Jekyll and Hyde, receiving an orchid for his performance. He has also participated in Forum, Cabaret, set design for I Love You.... (orchid and State Octa awards) Don't Drink the Water (Orchid and regional OCTA for filling in for Father Draubney) Micheal has directed many musicals and plays throughout his career including directing Gypsy next Spring. He is very excited for this opportunity to serve LSC!

Biography for Board Nomination Dave Marcus

Dave had served on the LSC Board for the four years prior to 2018. He was elected Board Vice President during this time. During his time on the Board, Dave was active in Board functions including The Amazing Race and the LSC Scholarship Committee. He was also instrumental in finding and purchasing the new seating for the theater. Dave and his wife Susan have been in many LSC productions over the course of the past eight years and have really appreciated the friendship and commitment of the LSC members to putting on excellent shows. Dave has also been involved in many LSC Christmas shows and SummerFair performances. At present, Dave's main LSC pursuit is aggravating Margie during her Saturday dance classes. He does an excellent job at this....just ask Margie!

ELECTION





Loveland Stage Company

LSC History

In 1979 a group of eleven people, interested in live theater, gathered at the home of Pat Furterer and after introductions and discussions, we began forming what is now known as The Loveland Stage Company. Several months were spent drawing up by-laws and creating a constitution for the group. Next came the task of obtaining a tax free status. Newspaper articles and word-of-mouth brought a great deal of interest to the newly formed community theater organization. A local businessman lent money to the group for their first production in the Fall of 1979. The production was a great success, initial funds were paid back and a small profit was realized.

Over the years we have encouraged, nurtured, and worked with people to extend their talents into every area of live theater. We have held workshops in several areas and performed for many groups in the area, including Nursing Homes, Senior Citizens Centers, etc. Many of our members assist with local school productions (working along with students), lending costumes, sets, lighting, etc. Since the 1991-2 season we have offered a "Creative Arts Scholarship" to assist a graduating senior in the Loveland School District.

Since 1980 we have continuously presented at least two major productions. We have held Ice Cream Socials, Musical Picnics In The Park (free to the public), a One Act Play Festival, made a video presentation for the Ohio Nurses Association and held a dinner theater. All funds realized from our shows are put into the next productions, used for the scholarship fund, and renovations of our theater building.

Many of our earlier productions were in the local schools – when it is convenient for them. The storage of sets, costumes and props has always been a major problem. Then several years ago the Loveland Firefighters Association purchased an old movie theater and after several months donated it to the Company. For this generous contribution the Stage Company nominated the Firefighters Association for the prestigious "Post Corbett Award" and to our delight they won! Since 1998 we have been writing grants, soliciting funds from local businesses, individuals, and organizations to renovate this old theater. Many, many hours of volunteer work by our members eventually enabled us to open the theater. We held a Grand Opening in October 2002.



Loveland Stage Company

PROMPTER CLASSIFIEDS

WANTED

DANCERS ALL LEVELS

Saturday Morning Dance Class with Marjory Clegg

9 A.M.—10 A.M. Ballet and Jazz
10 A.M.—11 A.M. Tap

Call Margie 513 683 6169

CALLING FOR PATRONS

Show your support for our community
theater by being a Patron in our
Programs!

Leading Role Patron	\$ 1,000.00
Standing Ovation Patron	500.00
Bravo Patron	100.00
Curtain Raiser Patron	50.00
Show Patron	25.00

Donation checks can be made out to
"LSC" and mailed to
Loveland Stage Company
P.O. Box 312
Loveland OH 45140
Att.: Pat Furterer

TECH HELP WANTED Lighting

Contact

Bob Kessler
kessler@fuse.net
OR
Greg Smith
eerf99@aol.com

ANNOUNCEMENTS

PROMPTER NOW AVAILABLE

The Prompter is now available
(via e mail) to all. You no longer
need to be a LSC member to
receive The Prompter.

Please send all e mail
addresses of non members
wishing to receive
The Prompter to Greg Smith—
eerf99@aol.com.

Under subject write
"New Prompter"

SPECIAL NOTES

40th Grand Party

Sept. 14th

Save the date

BECOME A MEMBER AND JOIN THE FUN !!!

See Application on Page 24
OR CONTACT
LSC Membership Chair
Paul Derham
pderham@cinci.rr.com

UPCOMING

BUGSY MALONE JR.

Directed by Pia Rader
Produced by Jonathan Eckman
& Jill Gornet

July 12th -21st 2019

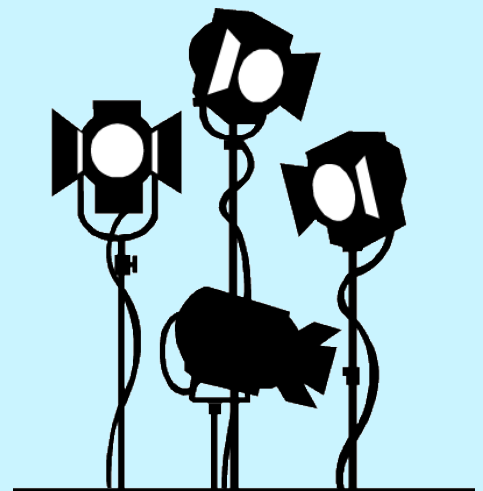
MAMMA MIA

Directed by Deidre Dyson
Technical Director Glenna
Knapp
Produced by Steve & Theresa
Kovacs

August 16th - 25th 2019

LSC Elections May 21st

See page 17



E mail ad requests to Greg at
eerf99@aol.com
All ads subject to approval of Prompter



Loveland Stage Company

Thank you

The LSC Costume Room is undergoing a reorganization effort. Over the past few weeks, a small group of volunteers have been assisting the Costume Chair, Carissa Sloan, in sorting and reorganizing the costumes. A big thank you to Carolyn Finn, Jill Gornet, Sue Lundy, and Mary Shumar for helping. With these ladies' help, we have been able to organize the men's shirts, suit jackets, pants, tux jackets and pants, and rematch men's suits; we now have an entire rack of 2 piece men's suits. We have also pulled out and reorganized totes of hats, some specialty costumes, and accessories like ties and vests. A big thank you also goes to Donna Treinen for working on dance costumes, both racks and totes. We will be continuing our work to make the costume room more user friendly for costumers and overall, more organized.





Loveland Stage Company

Committee Leaders 2018-2019

ACT Representative	Carissa Sloan	513-910-4330
OCTA Representative	Carissa Sloan	513-910-4330
OCTA Alternate	Christina Siciliano	513-290-6934
Lighting System	Bob Kessler	513-403-2009
Sound System	Glenn Bladh	513-484-1527
Theater/Building Manager	Bob Kessler	513-403-2009
Costume Mistress	Carissa Sloan	513-910-4330
Makeup	Christina Siciliano	513-290-6934
	Kate Arnold	513-478-0634
Publicity	Nancy Downing	513-677-5108
Tickets	Pam Carothers	513-443-4572
Webmaster	Dave Bauer	513-225-4731
Prompter Editor	Gregory Carl Smith	513-324-8314
Sunshine	Carolyn Finn	513-683-1713
Patrons	Pat Furterer	513-683-9687
Membership	Paul Derham	513-702-0567
Play Research	Pat Furterer	513-683-9687
Librarian	Open	
Historian	Carolyn Finn	513-683-1713
Scholarship	Theresa Kovacs	513-697-6769



Loveland Stage Company

Saturday Morning Dance Classes With Award Winning Choreographer

Marjory Clegg

9 AM—10 AM
10 AM—11 AM

Ballet & Jazz
Tap

Brush up for a show or Dance just for the freedom of dance!

All levels Welcome

Classes are held at the LSC Theater

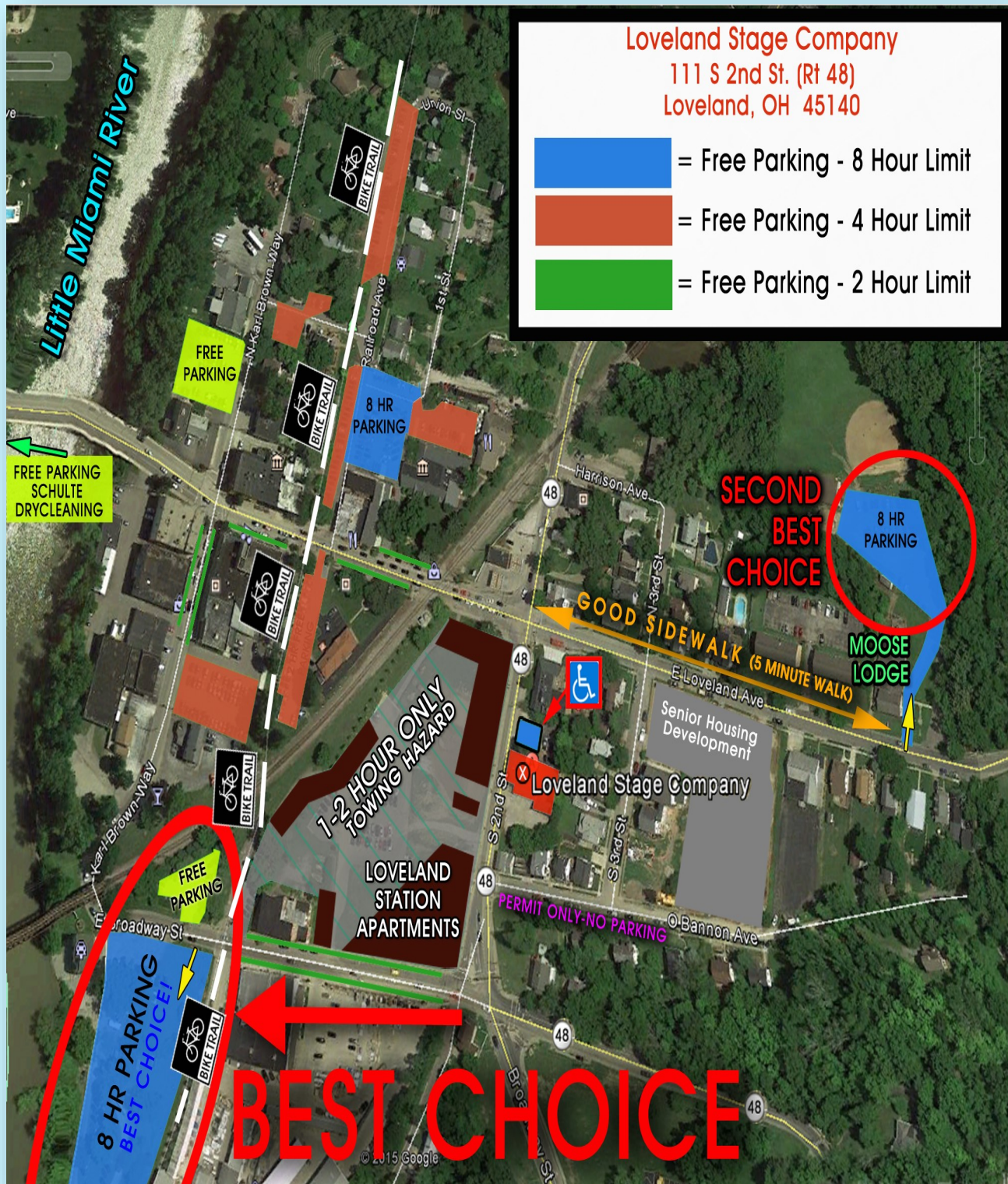
For more information or to join class call
Marjory at 513 - 683 - 6169





Loveland Stage Company

Parking is available





Loveland Stage Company

Donate to
**The Loveland Stage
Company** every time you shop!



**Donate to the Loveland Stage Company
every time you shop.**

It's Easy to Help!

1. Visit www.kroger.com/communityrewards
2. Sign into your account, or create an account
3. Find and select Loveland Stage Company and click save

Loveland Stage Company will start earning rewards right away on all qualifying purchases made using your Kroger Plus Card!

Thank you for supporting

Loveland Stage Company

Award Winning Community Theatre



amazonsmile
You shop. Amazon gives.

Amazon donates 0.5% of the price of your eligible AmazonSmile purchase to the charitable organization of your choice.

AmazonSmile is the same Amazon you know
Same products, same prices, same service.

Support your charitable organization by starting your shopping at
www.smile.amazon.com.

1. Sign Up at www.smile.amazon.com
2. Choose **Loveland Stage Company** as your charitable organization
3. Shop and donate... **It's that easy!**
4. To change your existing charity of choice, log into your account at www.smile.amazon.com, click on Your Account under your name and select Change your charity.

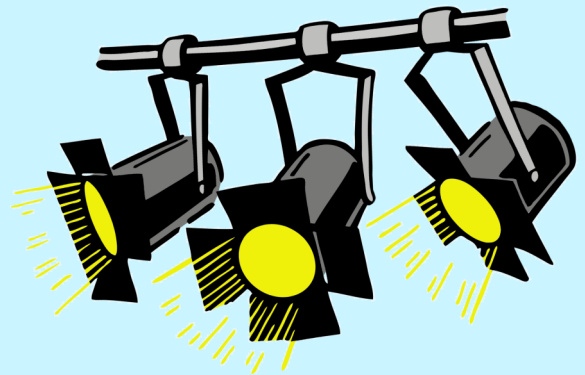


Loveland Stage Company



*Ohio Community Theater
Association*

www.octa1953.org



*Supporting and Promoting
Artists and the Arts Year-Round*

www.summerfair.org



www.actcincinnati.org



Loveland Stage Company

Award Winning Community Theatre

Membership Application

Anyone wishing to participate in any capacity with LSC must become a member. Paid membership entitles you to participate in voting privileges (members 18 and older), receive the Prompter newsletter and participation in all productions and member activities. Membership dues expire at the end of each current fiscal year (May 30th). Questions? E-mail: pderham@cinci.rr.com.

Name: _____

Address: _____

City/State/Zip: _____ Email: _____

Phone: Daytime: _____ Home: _____ Cell: _____

Please check appropriate boxes:

Individual ☐ \$15 Couple ☐ \$25

Loveland Stage Company Donors

Our facility is continuously being improved so that we can provide a more enjoyable venue for everyone involved in the Loveland Stage Company experience. Since the recent addition of new seating we have more plans that cannot be achieved without the generous donations from our patrons. Donations are tax-deductible and are always acknowledged with a listing in our programs. Your donation can be included with your membership application today. Just select one of the following levels and add the tax-deductible contribution amount to your membership dues payment below.

☐ \$1000+ Leading Role ☐ \$500 Standing Ovation ☐ \$100 Bravo
☐ \$50 Curtain Raisers ☐ \$25 Show Patron

If donating, how would you like your name(s) to appear on the program page? _____

Spotlight Patio Capital Improvement Campaign

Share your appreciation for the arts and become a permanent part of the Loveland Stage Co. Theater by purchasing a brick for the Spotlight Patio. Memorialize your part in one of our productions, pay tribute to a loved one, advertise your company or just become a permanent part of our theater. Bricks are available in 2 sizes: 4" x 6" \$100 or 12" x 12" \$500. By purchasing a brick you will be supporting enhancements to the Theater's exterior while helping to raise funds for continued improvements to the LSC theater experience. Each brick is fully tax deductible. This campaign allowed us to purchase new seating. There are more improvements that cannot be achieved without the generosity of our patrons..

For details, go to our website www.lovelandstagecompany.org or email: n_downing@fuse.net.

Please make checks payable to Loveland Stage Company and submit completed application with payment to:
The Loveland Stage Co., P.O. Box 312, Loveland, Ohio 45140